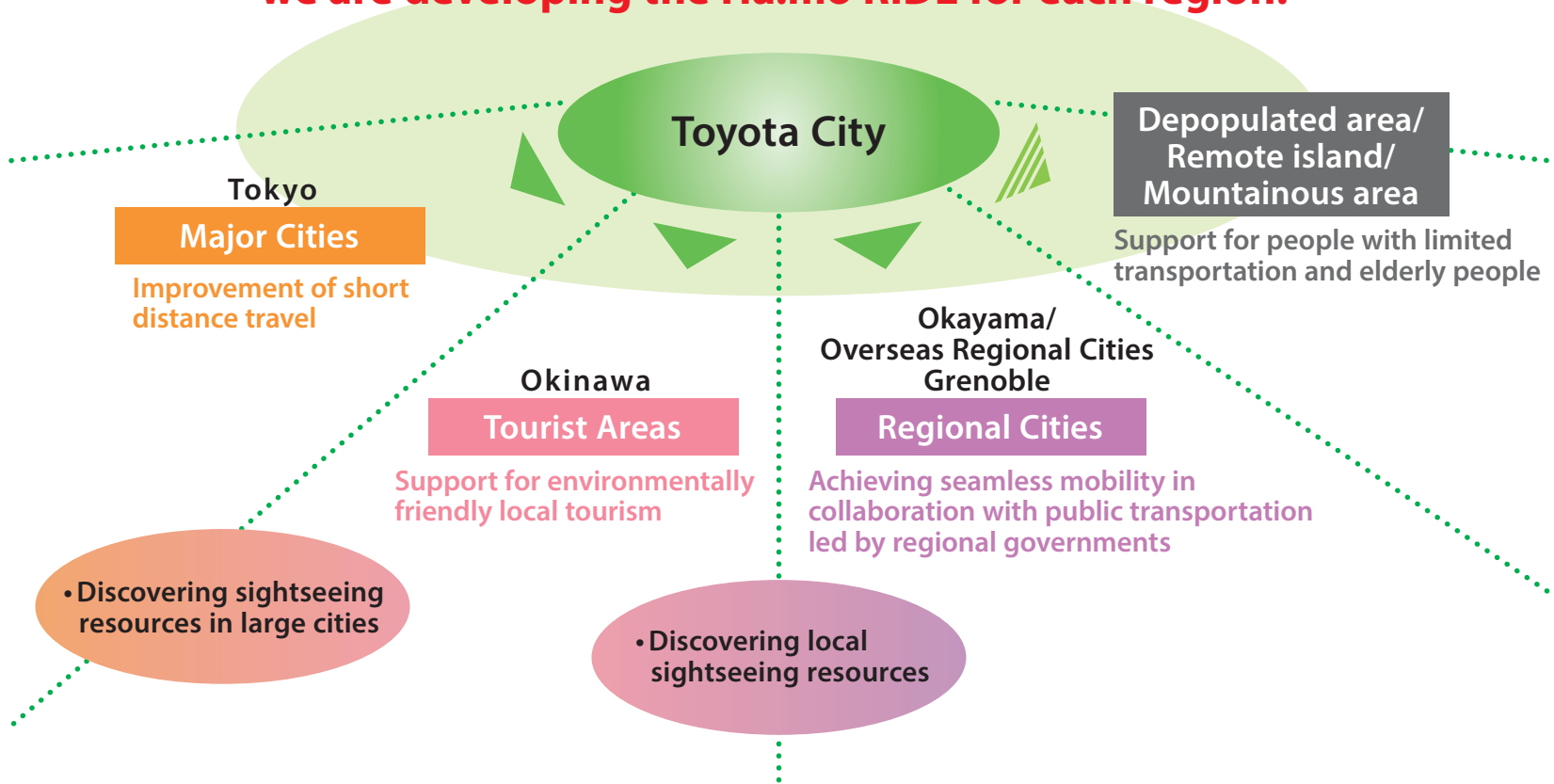


Developing Ha:mo for Various Uses

Toyota is developing field operation test of the Ha:mo which is tailor-made for the region's needs. From this study, we are collecting the usage know-how of Ha:mo made to fit each region's needs.

With the Field Operation Test in Toyota City as the base, we are developing the Ha:mo RIDE for each region.



Metropolis Model

Major Cities: Tokyo
Improvement of short distance travel

- Filling gaps of public transportation
- Effective use of city spaces

Times Car PLUS
×
Ha:mo



- Since October, 2015
- Improvement of convenience for short-distance movement utilising urban space

i-ROAD: 5, COMS: 95
Stations: about 100
as of October, 2017

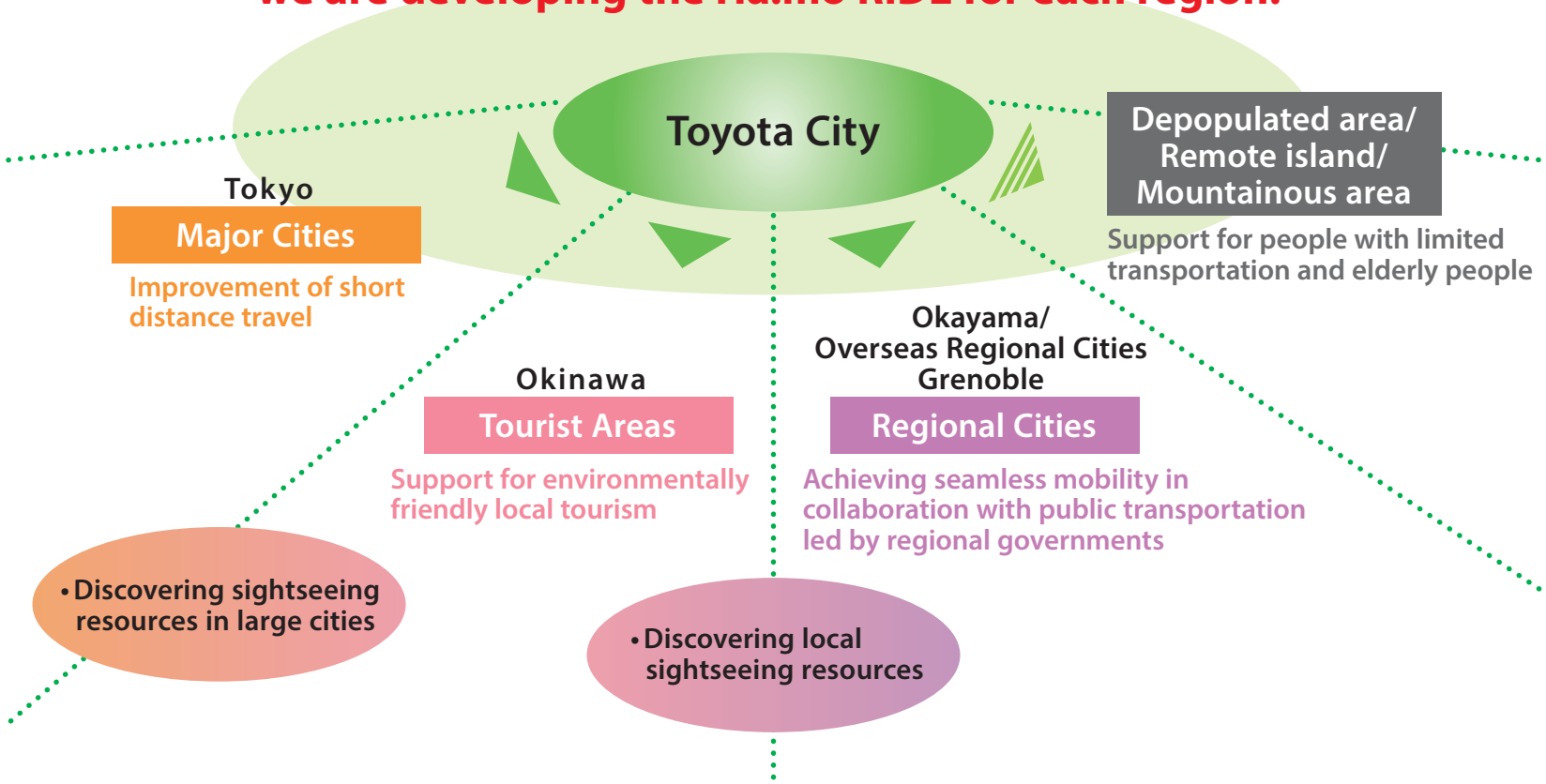


TOYOTA

Developing Ha:mo for Various Uses

Toyota is developing field operation test of the Ha:mo which is tailor-made for the region's needs. From this study, we are collecting the usage know-how of Ha:mo made to fit each region's needs.

With the Field Operation Test in Toyota City as the base, we are developing the Ha:mo RIDE for each region.



Metropolis Model

Major Cities: Tokyo

Improvement of short distance travel

- Filling gaps of public transportation
- Effective use of city spaces



- Since April, 2016 - December, 2017
- Higher freedom of mobility for condominium residents

COMS: 16, Stations: 5
Dedicated service for target condominium residents as of October, 2017

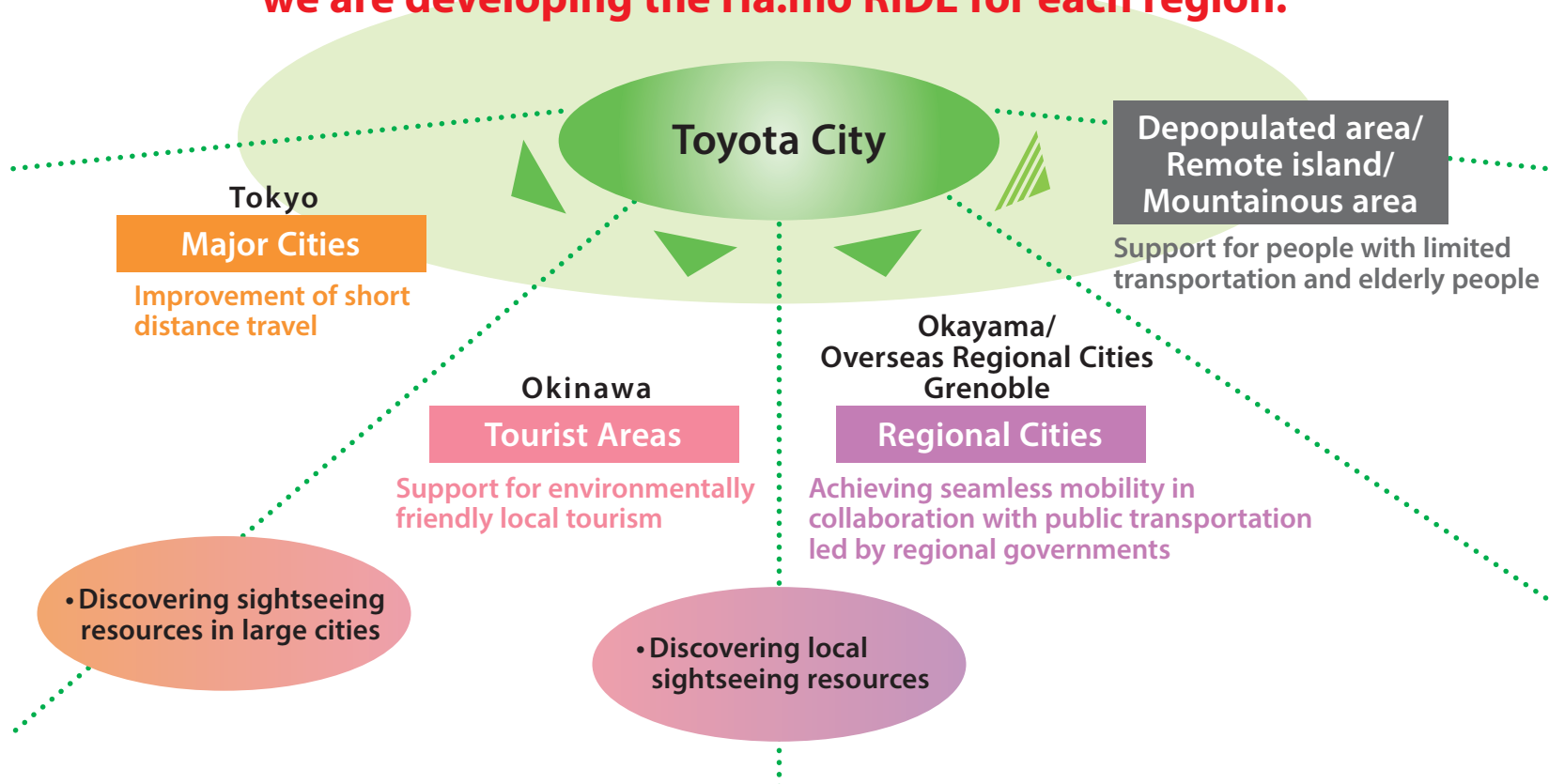


TOYOTA

Developing Ha:mo for Various Uses

Toyota is developing field operation test of the Ha:mo which is tailor-made for the region's needs. From this study, we are collecting the usage know-how of Ha:mo made to fit each region's needs.

With the Field Operation Test in Toyota City as the base, we are developing the Ha:mo RIDE for each region.



Tourist Model

Commercialized

Tourist Areas: Okinawa

Support for environmentally friendly local tourism

• Environmental contribution by ultra compact EV and access restriction



- Since January, 2016 (Commercialized April, 2017)
- Tourism promotion and regional revitalisation

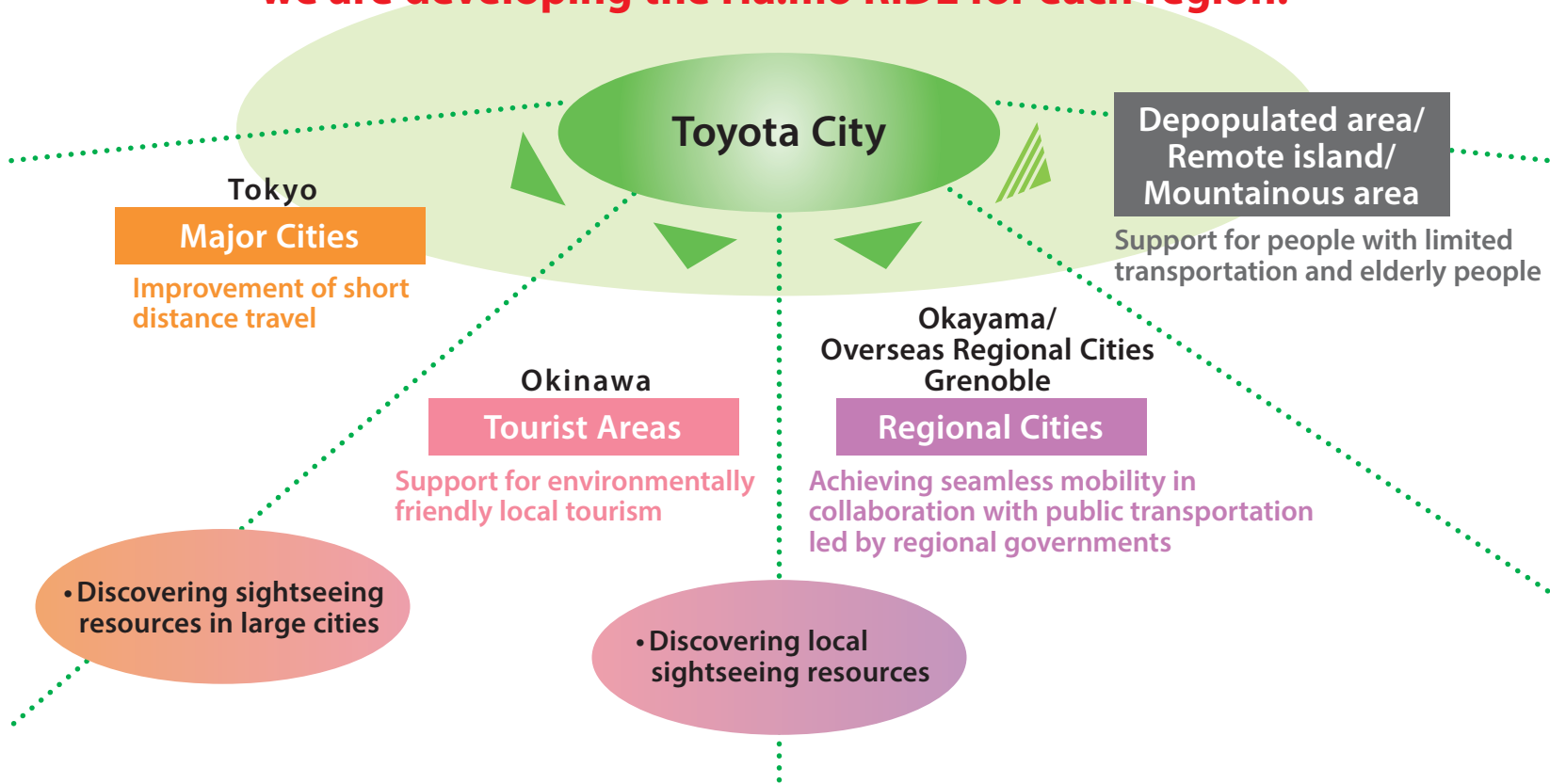
COMS: 38
Sightseeing courses: 14
as of October, 2017



Developing Ha:mo for Various Uses

Toyota is developing field operation test of the Ha:mo which is tailor-made for the region's needs. From this study, we are collecting the usage know-how of Ha:mo made to fit each region's needs.

With the Field Operation Test in Toyota City as the base, we are developing the Ha:mo RIDE for each region.



Regional City Model

Commercialized

Regional Cities: Toyota City

Achieving seamless mobility in collaboration with public transportation led by regional governments

- Filling gaps in public transportation
- Building a multimodal traffic network

Toyota City Ha:mo RIDE



- Since October, 2012
(Commercialized April, 2017)
- Master project verifying collaboration with public transportation

COMS: 106
Stations: 51
as of October, 2017

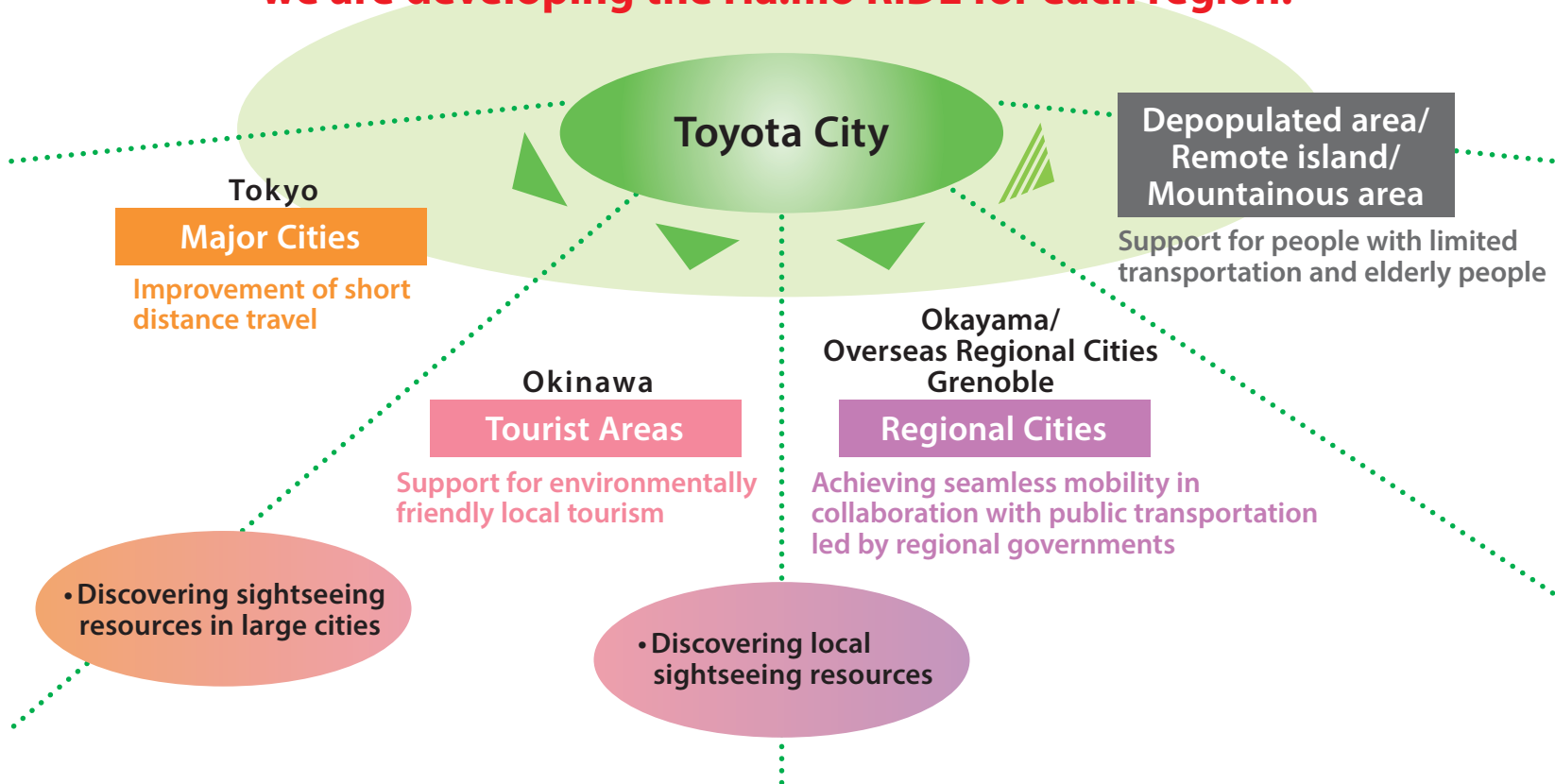


TOYOTA

Developing Ha:mo for Various Uses

Toyota is developing field operation test of the Ha:mo which is tailor-made for the region's needs. From this study, we are collecting the usage know-how of Ha:mo made to fit each region's needs.

With the Field Operation Test in Toyota City as the base, we are developing the Ha:mo RIDE for each region.



Regional City Model

Regional Cities: Okayama

Achieving seamless mobility in collaboration with public transportation led by regional governments

- Filling gaps in public transportation
- Building a multimodal traffic network

Okayama City Ultra-Compact Mobility Experimentation "OKAMOBI"



- Since October, 2017 - January, 2018
- Complementing public transportation and increasing citizen's migration

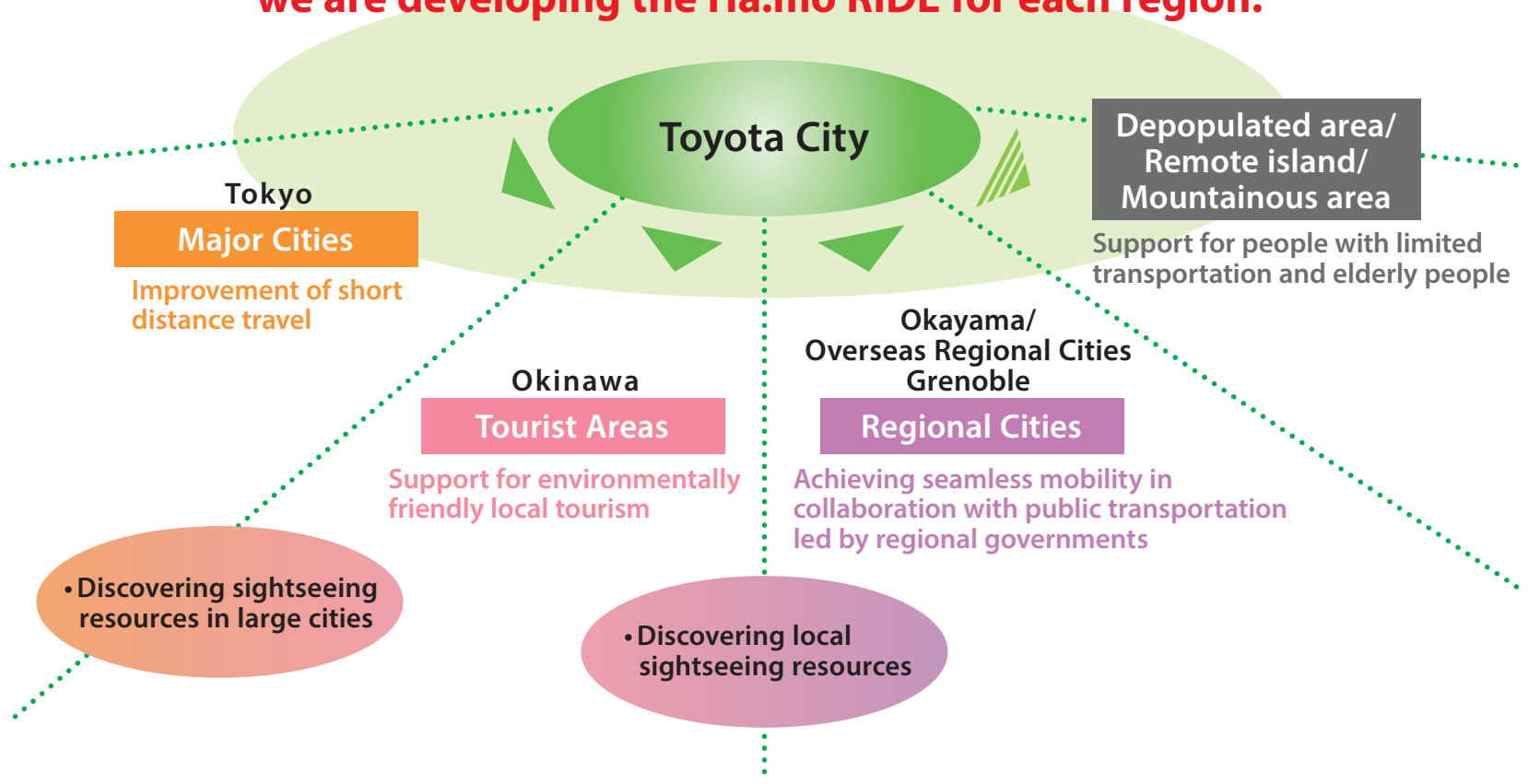
COMS: 10
Stations: 5 plus 3 stopover stations as of October, 2017



Developing Ha:mo for Various Uses

Toyota is developing field operation test of the Ha:mo which is tailor-made for the region's needs. From this study, we are collecting the usage know-how of Ha:mo made to fit each region's needs.

With the Field Operation Test in Toyota City as the base, we are developing the Ha:mo RIDE for each region.



Regional City Model

Regional Cities: Grenoble

Achieving seamless mobility in collaboration with public transportation led by regional governments

- Filling gaps in public transportation
- Building a multimodal traffic network



- Since October, 2014 - November, 2017
- Validating effectiveness and business feasibility of short-distance mobility service towards the construction of multimodal traffic network

i-ROAD: 35, COMS: 35
Stations: 27
as of October, 2017

